


**C  
E  
L  
E  
B  
R  
A  
T  
E  
!**

 In Collaboration with... **Florida Department of EDUCATION**

**STUDENT SERVICES WEEK**

February 3-7, 2014





Photo Courtesy of Chad Baker/Plyan McVilly/Thinkstock

 In Collaboration with... **Florida Department of EDUCATION**

**Mission**

To develop and promote the implementation of a statewide system of comprehensive, multi-tiered supports for social, emotional, behavioral, mental, physical health and safety so that all students engage in effective academic and behavioral instruction and interventions.

**With Student Services Professionals**

**SSS Online Webinars**

**SSS Online Webinars**

Student Support Services Project,  
University of South Florida,  
Florida Department of Education,  
Bureau of Exceptional Education &  
Student Services  
<http://sss.usf.edu>

Contact Student Support Services Project at  
850-245-7851




**Our Beliefs are...  
What Drive Us**

- ◆ Evidence based practices, using multiple sources of data within the team-based planning and problem solving process
- ◆ Integrating efforts across areas of expertise to result in a unified, efficient system that engages students
- ◆ Connecting our efforts to student outcomes

**Removing Barriers & Providing Learning Supports**

School Psychologists | School Counselors | School Nurses | School Social Workers

**Learning Supports Improve Health, Attendance, Academic & Career Outcomes!**



**Mental, Physical, Social, Emotional & Behavioral Health**

**Attendance**

**Academic & Career**

Image Courtesy of Thinkstock

School Psychologists | School Counselors | School Nurses | School Social Workers

Approximately 20% of the student population in Florida report the following health conditions:

- Asthma
- Health Education and Physical Education
- School Community Wellness Activities
- Cystic Fibrosis
- Diabetes

Health Conditions: Vision; Height, Weight and BMI; Seizures; Chronic Disease; School Health Fairs; Dental; Mental Health

2011-2012 Annual School Health Services Report: <http://www.floridahealth.gov/healthy-people-and-families/childrens-health/school-health/documents/11-12-county-data-sheets.pdf>

School Psychologists | School Counselors | School Nurses | School Social Workers  
Image Courtesy of Diyant/Thinkstock

Students who receive social-emotional support and prevention services **achieve better academically** in school and exhibit declines in disciplinary referrals, suspension, grade retention and special education placement.

Student Services professionals...

- **Provide the highest quality of care to all students, regardless of their background.**

Image Courtesy of Johannes Norpoth/Thinkstock

School Psychologists | School Counselors | School Nurses | School Social Workers

### Common Mental Health Prevention Services

- Multi-tiered supports
- Positive behavior support
- Developmental guidance program
- Character education programs
- Bullying, suicide and substance abuse prevention programs
- Social skills training
- Early warning systems
- School climate initiatives
- Health education

School Psychologists | School Counselors | School Nurses | School Social Workers  
Photo Courtesy of Jeremy McHesley/Thinkstock

### Student Services Professionals ...Keep Students Engaged in Learning

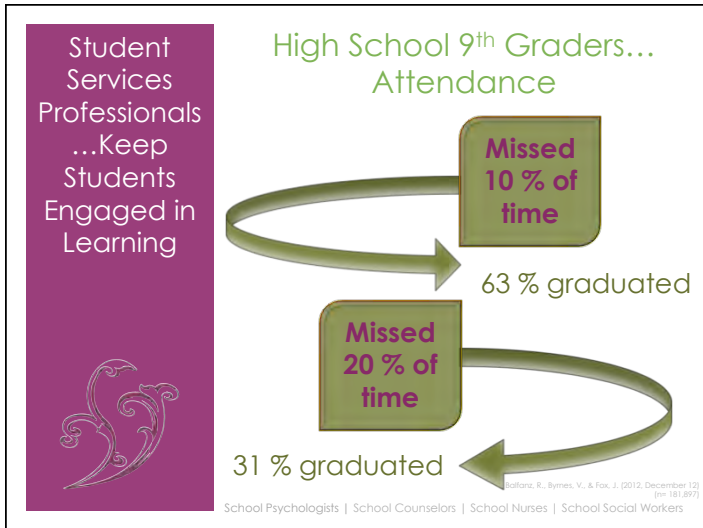
### Positive Attendance Habits are Essential

Regular Attendance +

Academic Engaged Time =

Student Success!

School Psychologists | School Counselors | School Nurses | School Social Workers



School counseling programs promote student success through a focus on academic achievement, prevention and intervention activities, advocacy and career development

### School Counselors Help Students to...

- Develop skills and academic achievement

Photo Courtesy of Digital Vision/Thinkstock

School Psychologist | School Counselors | School Nurses | School Social Workers

School counseling programs promote student success through a focus on academic achievement, prevention and intervention activities, advocacy and career development

### School counselors work with school-based teams to examine...

- Student behavior and academic support services

Photo Courtesy of Chad Baker/Ryan McVay/Thinkstock

School Psychologist | School Counselors | School Nurses | School Social Workers

Competencies, such as...

- Study skills
- Test-taking skills
- Problem-solving skills
- Self-esteem
- Communication skills
- Personal responsibility

Form the core content of school counseling programs

Image Courtesy of Chris Lamphear/Stock/Thinkstock

School Psychologist | School Counselors | School Nurses | School Social Workers

PowerPoint Presentations:

- Student Progression: 2014 Proposed Legislation and Current Requirements
- Benefits of Career and Technical Education (CTE)
- Division of Florida Colleges Update
- Free Application for Federal Student Aid (FAFSA) Completions in Florida
- American School Counselor Association (ASCA) National Model
- High School Dual Enrollment: Fast Track to College?

4<sup>th</sup> Annual Northeast Florida Education Consortium (NEFEC) Counselor Forum  
<http://www.nefec.org/college-and-career-readiness/page-765/>  
 January 14, 2014

13

STUDENT SUPPORT SERVICES PROJECT *In Collaboration with...* Florida Department of EDUCATION

THANK YOU!

For Celebrating Student Services Week...



Mission

To develop and promote the implementation of a statewide system of comprehensive, multi-tiered supports for social, emotional, behavioral, mental, physical health and safety so that all students engage in effective academic and behavioral instruction and interventions.


STUDENT SUPPORT SERVICES PROJECT *In Collaboration with...* Florida Department of EDUCATION

With Student Services Professionals

Student Support Services Project

Student Support Services Project,  
 University of South Florida,  
 Florida Department of Education,  
 Bureau of Exceptional Education & Student Services  
<http://sss.usf.edu>

Contact Student Support Services Project at:  
 850-245-7851



Our Beliefs are...  
 What Drive Us

- Student Services professionals support highest student achievement by identifying problems in the student's academic performance and social-emotional health in the way that best meets their needs.
- Once a problem is identified we work to solve it through direct services with the student, the parent and the teacher.
- We offer assistance to schools and families to help create a classroom and a home environment that is best suited to the educational and emotional needs of the student.

Removing Barriers & Providing Learning Supports

School Psychologists | School Counselors | School Nurses | School Social Workers